

i-com
Installation Instructions

- Table of Contents -

1. Installing i-com Manager Tool
2. Installing i-com User Tool
3. Removing i-com User Tool
4. Removing i-com Manager Tool

[Glossary]

It is recommended to conduct installations in the following order.

- 1) i-com Manager Tool
- 2) i-com User Tool

Removal of programs should be in the following order.

- 1) i-com User Tool
- 2) i-com Manager Tool

Notice!

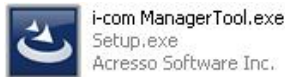
Do not abort network monitor stations running on the Vspace console program, while the installation of an i-com program is in progress.

Aborting the network monitor station while installation is in progress may result in an incomplete installation of the program.

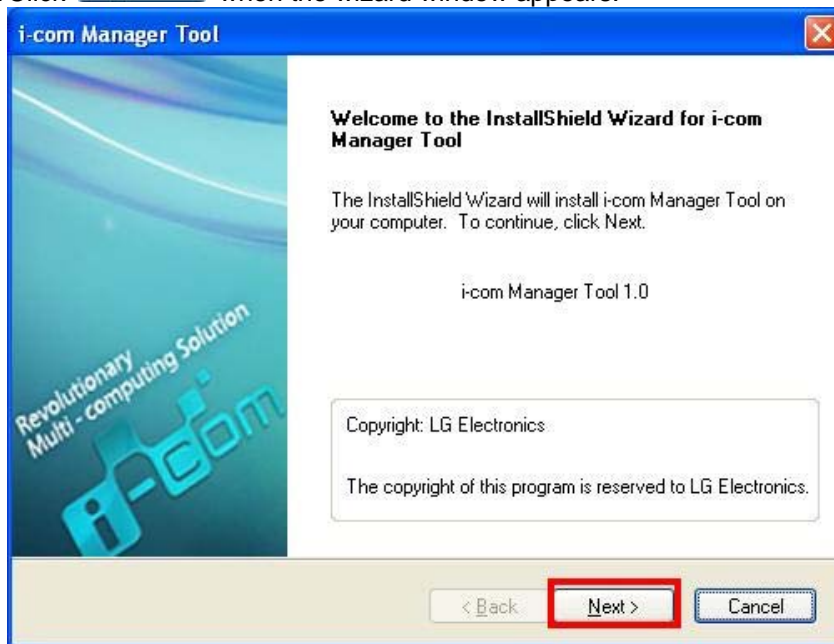
1. Installing the i-com Manager Tool

The following steps provide instructions on how to install the program on a Manager PC intended to manage User PCs.

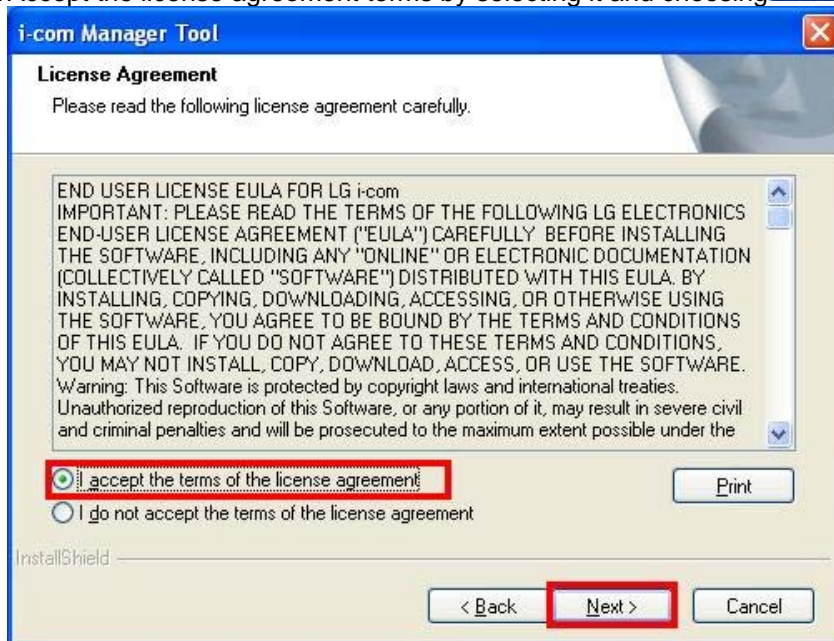
1.1. Double click on the Manager Tool installation icon.



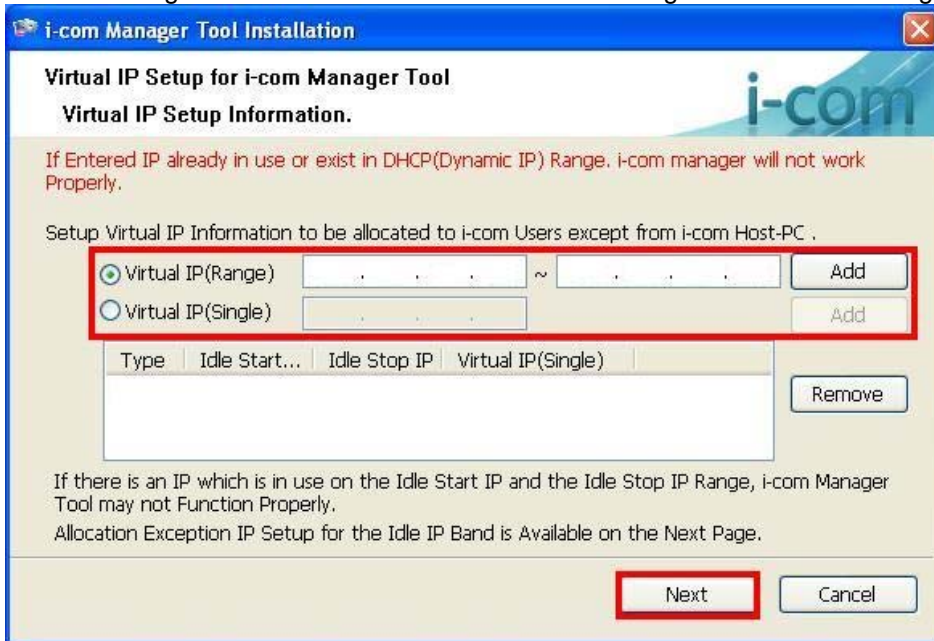
1.2. Click when the wizard window appears.



1.3. Accept the license agreement terms by selecting it and choosing .



1.4. This will configure the virtual IP address that will be assigned to the connecting users.



Enter unassigned IP data from the ping test in the Virtual IP Range box, instead of the IP data of the Host PC. A virtual IP address entered in the box will be assigned to the network monitors by each login user. Network monitors not received, or outside of the Virtual address range, cannot be controlled by the I-com tools.

In the Virtual IP (Range) box, at least one IP address can be entered.

In the Virtual IP (Single) box, you can enter one single virtual address.

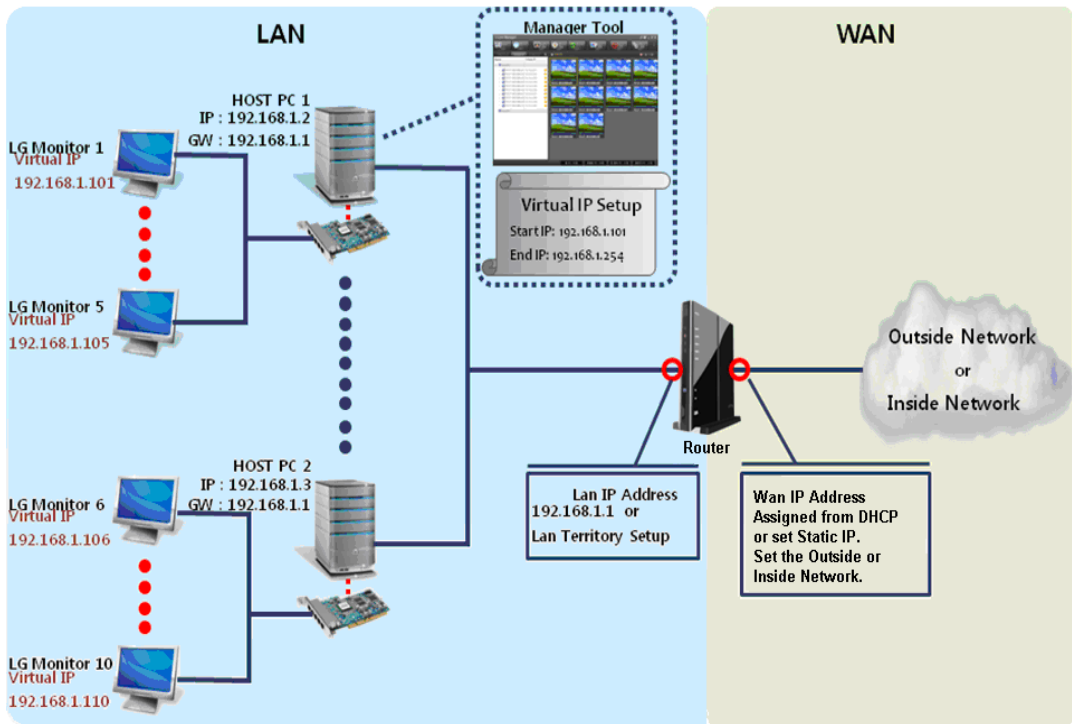
You may either choose one from Virtual IP (Range) or Virtual IP (Single), or both, to add the virtual IP data.

※ In order to skip the IP configuration, click on [Next] and then [OK], to proceed without providing the necessary IP addresses during installation. You may opt to configure the IP addresses later after installation is complete.

※ Virtual IP address entry is not made by the user assignment unit, but rather to the network monitor. Once an IP address is assigned to a PC, changing the user on that PC will not affect the assigned IP configuration of the PC.

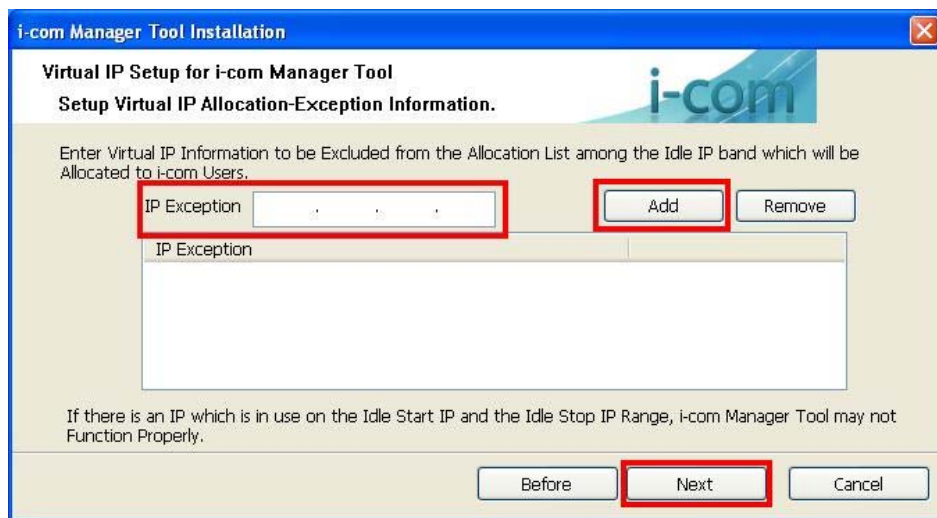
[Tips when using a router]

1) The following setup is recommended when used with a router.



The virtual IP environment, via a router, is the minimum requirement to facilitate the Network Monitor. The external server access from the router cannot recognize virtual IP addresses configured for the Network Monitor.

- 1.5. To exclude IP addresses from the allocation list that are already taken up and fall under the range between the Idle start IP and Idle stop IP, enter each IP address to and click [ADD]. This will create a list of IP addresses to exclude. When finished, click [NEXT].



- 1.6. The monitor may flash during installation.



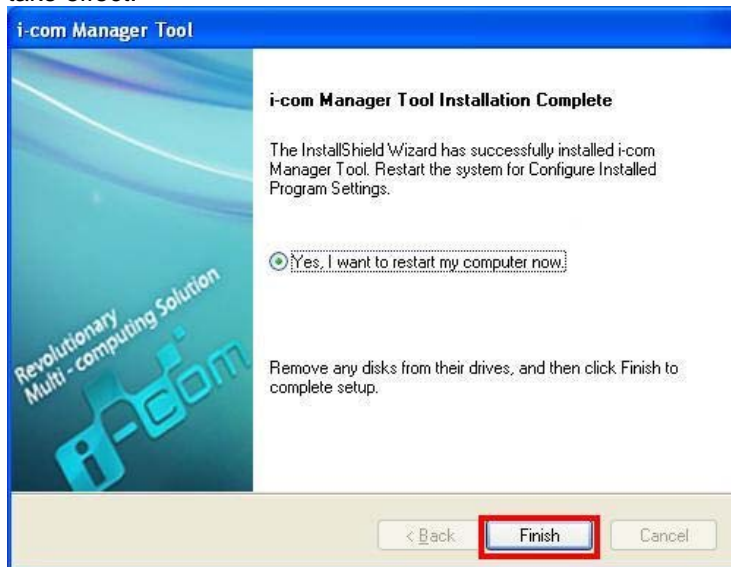
- 1.7. install hardware drivers.




1.8. The installation process will copy the necessary files and register their services.



1.9. With the entry of the virtual IP address for the i-com manager, the basic installation is complete. You need to choose and restart the computer for the changes to take effect.



1.10. After successful installation, the "Manager Tool" icon () will appear on the desktop.

2. Installing the i-com User Tool

The following steps provide instructions on how to install the user program on user PCs.

2.1. Software installation requirements

Software installation requirements are as follows:

[Minimum requirements]

- CPU: Pentium 4 or latest
- RAM: 512MB or more (1GB when using the LG Network Monitor Host PC)
- OS: Microsoft Windows Server 2003
Microsoft Windows XP SP2 or latest
- VGA: 1024 * 768 screen resolution and support of 16bit color graphics
- HDD: 5GB or more free space
- Network: Cable, DSL, LAN

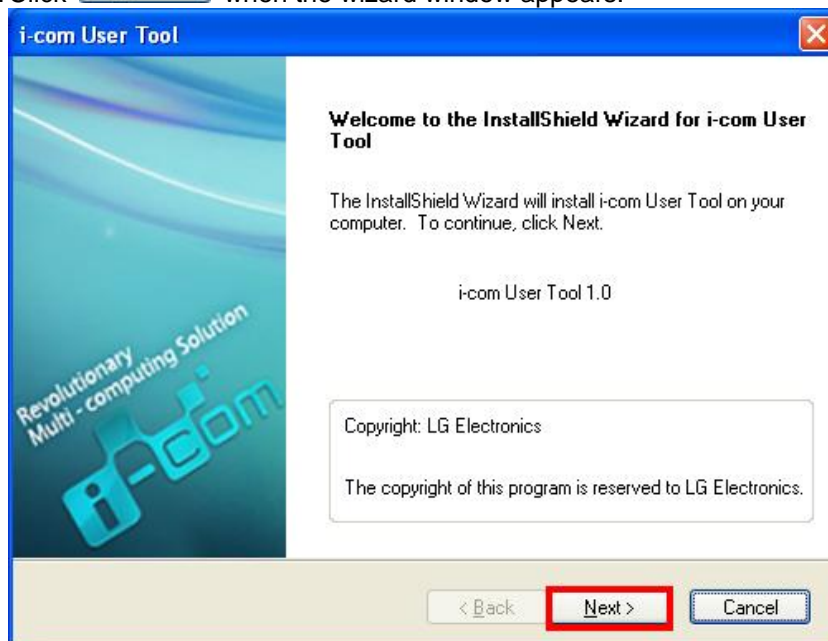
[Recommended requirements]


- CPU: Dualcore or better
- RAM: 1GB or more
- OS: Microsoft Windows Server 2003
Microsoft Windows XP SP3 or latest
- VGA: 1024 * 768 screen resolution and support of 32bit color graphics
- HDD: 10GB or more of free space
- Network: Cable, DSL, LAN

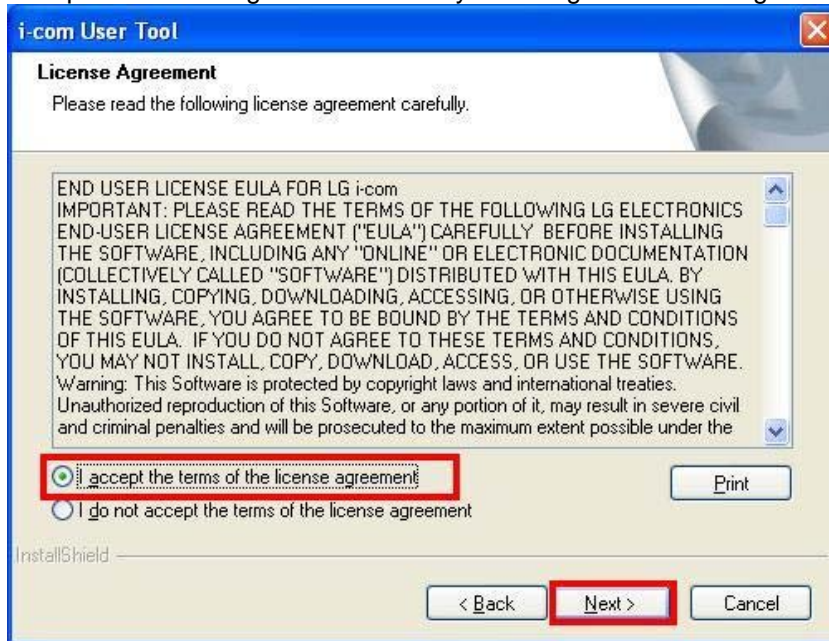
2.2. Double-click the user tool installation icon.



2.3. Click when the wizard window appears.

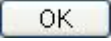


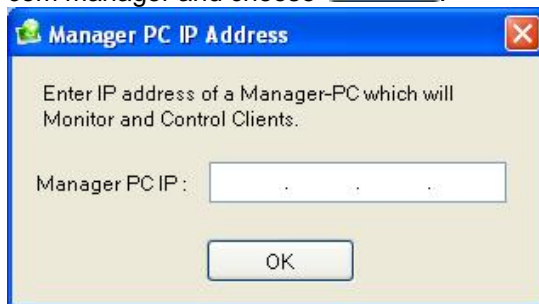
2.4. Accept the license agreement terms by selecting it and choosing .

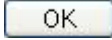


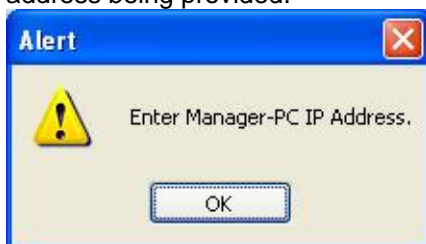
2.5. The installation process will copy the necessary files and register their services




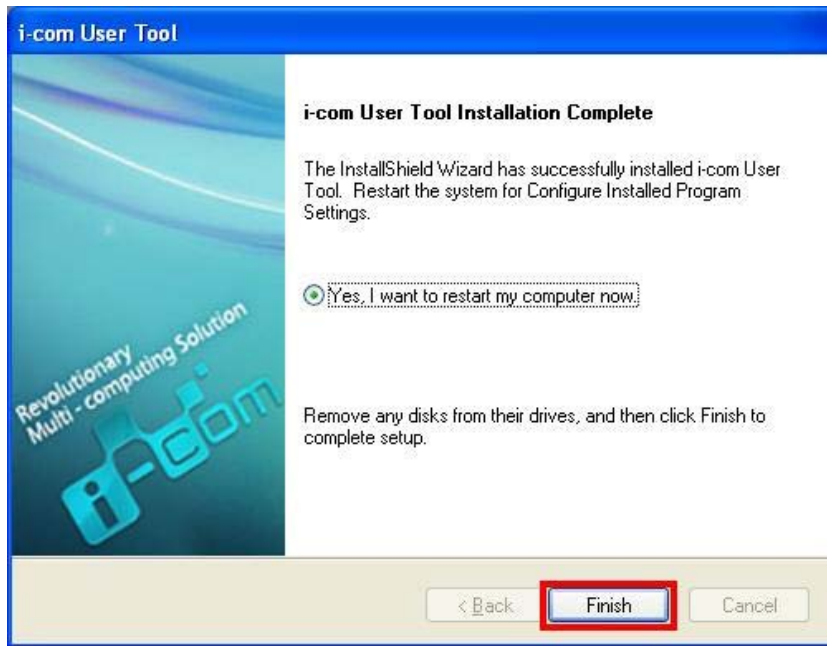
2.6. When copying and service registration is complete, enter the IP data assigned to the i-com manager and choose .




The following warning box will appear when  is chosen without the necessary IP address being provided.



2.7. With the entry of the IP address for the i-com manager, the basic installation is complete. You need to choose  and restart the computer for the changes to be effective.



2.8. After successful installation, i-com User is automatically launched at Windows Login and appears on the taskbar as a tray icon().

2.9. The following alert box appears when the manager tool and the user tool are installed onto the same PC.



3. Removing the i-com User Tool

The following steps provide instructions on how to remove the user tool from a PC.

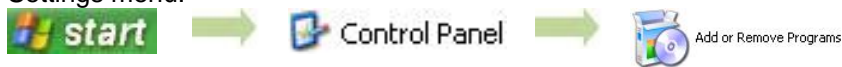
Abort the user process, if it is being used by another session, before proceeding to remove the program.

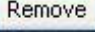
You can remove the user tool while it is connected to the manager tool.

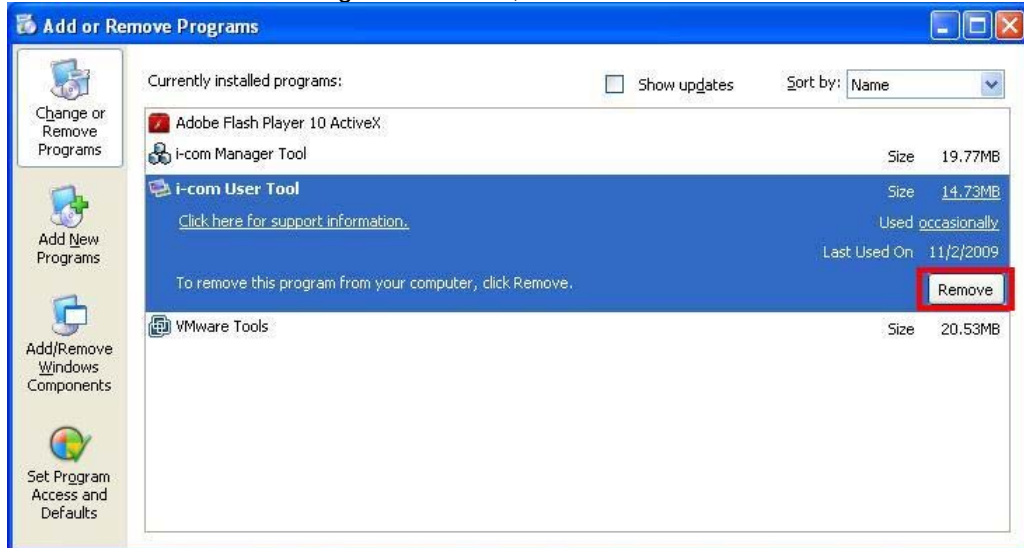
Warning!

You need to restart the computer to complete the removal process.

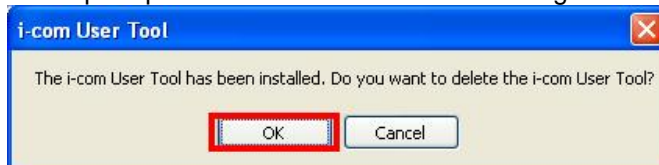
3.1. Choose 'Add or Remove Programs' under the Control Panel from the Windows Start and Settings menu.

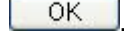


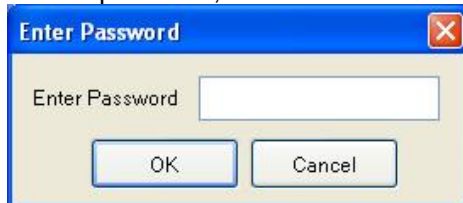
3.2. On the 'Add or Remove Programs' window, select the i-com user tool and then .



3.3. When prompted to continue or cancel removing the user tool, choose .



3.4. For the password, enter "LGMonitor" to delete the program and choose .



3.5. You need to restart the computer to complete the removal process, after the installed files and registered services are deleted.

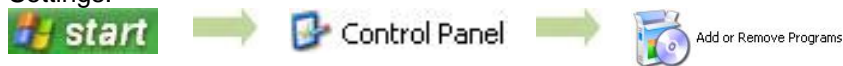
4. Removing the i-com Manager Tool

The following steps provide instructions on how to remove the i-com manager tool from a PC. **Abort the user process, if it is being used by other session, before proceeding to remove the program.**

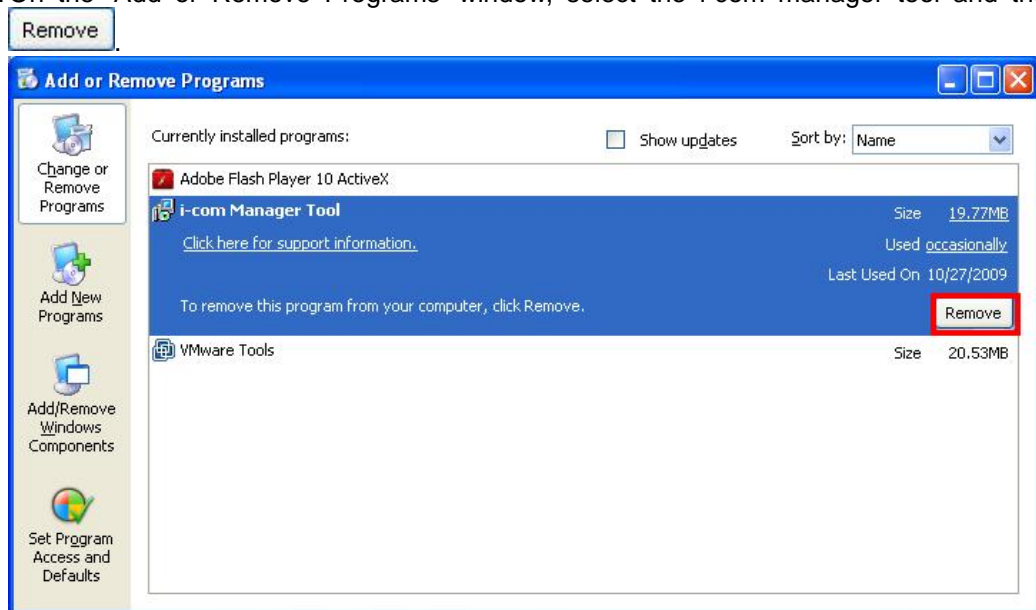
Warning!

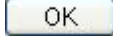
You need to restart your computer to complete the removal process.

4.1. Choose 'Add or Remove Programs' under the Control Panel from the Windows Start and Settings.




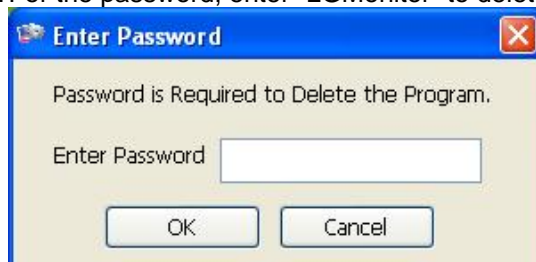
4.2. On the 'Add or Remove Programs' window, select the i-com manager tool and then



When prompted to continue or cancel removing the manager tool, choose .



4.3. For the password, enter "LGMonitor" to delete the program, and choose .



4.4. You need to restart the computer to complete the removal process after the installed files and registered services are deleted.

4.5. Any program that is running is aborted, and then deleted, when the removal is made from

the host pc, when both the manager tool and the user tool are used by other network monitors.

Alternatively, the 'prompt' alert will appear to confirm your removal action, and the removal process will continue when the password is entered correctly. The user with administrator authority should trigger the action from the host pc.

After successful installation of the i-com program, match the resolution for both the i-com manager and the user under a normal demonstration environment. For convenient facilitation of this, configure maximum user resolution through the vSpace Manager Console and then choose the same i-com manager resolution setting for an identical match, as the resolution of the manager is often higher.

[Glossary]

NIC

Refers to the Network Interface Card, more commonly known as the LAN Card. The NIC is an expansion board that is inserted into a computer to connect the computer to available external networks for the fast exchange of data. The NIC consists of a control chip, a communication-designated chip and a buffer.

The NIC included in the manual is a computer component installed on the host pc in the type of a PCI card that can be connected via a LAN cable to other computers and the internet environment. It refers to both physical computer connections and logic connections as shown on the [Start]→ Settings → Control Panel → Network.

IP Address

Refers to the labels assigned to identify devices participating in computer network communication, utilizing TCP/IP protocols.

IPs described in the manual, refer to IP addresses that need to be entered into the blank, as in the following example box, to connect the computer with the manager tool, installed in the PC, during installation of a the user tool.

