

IP-Pro
(Virtual IP Protocol Independent Version)
User Instructions

- Table of Contents -

1. IP Pro introduction
2. IP Pro installation
3. IP Pro setup
4. Virtual IP function check
5. Virtual IP changes
6. Terminating IP Pro
7. Deleting IP Pro

[Glossary]

1 IP Pro Introduction

IP Pro is a Virtual IP stand alone version designed to configure Virtual IPs.

One of the issues a virtual PC setup faces are IP conflicts that arise when the host PC assigns identical IP address to each connected virtual PC. IP conflicts within the same virtual PC setup may lead to unexpected program failure.

IP Pro addresses this issue by assigning unique Virtual IP addresses to each PC or user linked to a host PC.

In a virtual environment such as DHCP however, using a virtual IP may lead to IP address conflicts and reliable PC operation may be compromised due to the dynamic nature of IP addresses in a DHCP environment.

To facilitate an IP Pro environment, a static IP zone should be assigned for network devices, and the zone should be cordoned off and reserved strictly for virtual IP usage.

Other requirements include the virtual IP being on the same network with the user, with good communication reliability.

Software installation requirements are as follows:

[Minimum requirements]

- CPU: Pentium 4 or latest
- RAM: 512MB or more (1GB when using the LG Network Monitor Host PC)
- OS: Microsoft Windows Server 2003
Microsoft Windows XP SP2 or latest
- VGA: 1024 * 768 screen resolution and support of 16bit color graphics
- HDD: 5GB or more free space
- Network: Cable, DSL, LAN

[Recommended requirements]

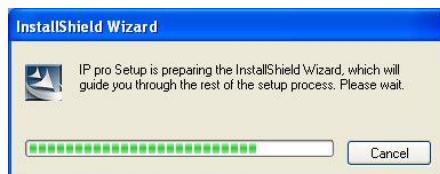
- CPU: Dualcore or better
- RAM: 1GB or more
- OS: Microsoft Windows Server 2003
Microsoft Windows XP SP3 or latest
- VGA: 1024 * 768 screen resolution and support of 32bit color graphics
- HDD: 10GB or more of free space
- Network: Cable, DSL, LAN

2 Installing IP Pro

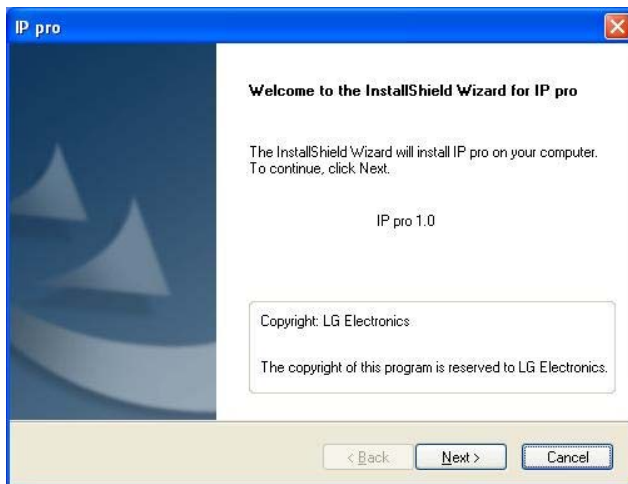
2.1. Double-click the program icon found on the desktop to start the installation process.



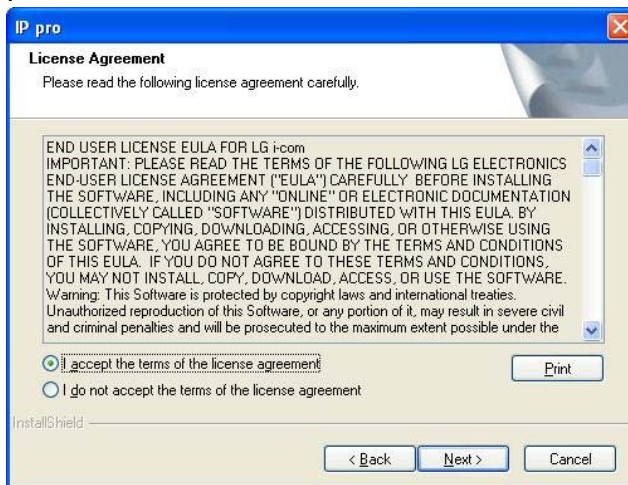
2.2. InstallShield Wizard will appear and installation will begin.



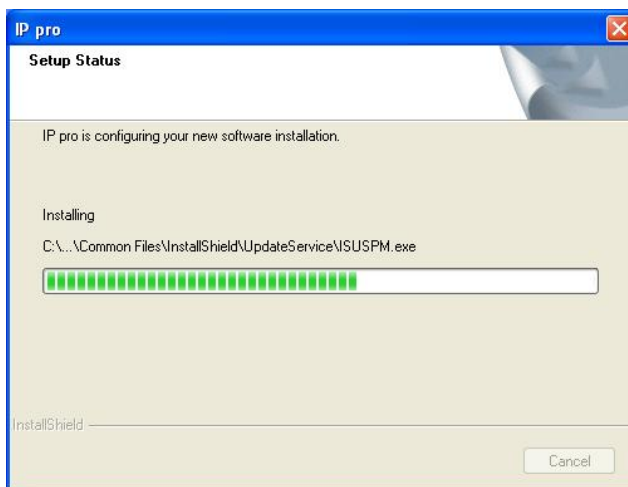
2.3. Click Next to continue the installation.



2.4. Please read the license agreement carefully and Select "I accept the terms of the license agreement" if you agree, before continuing with the Next button.

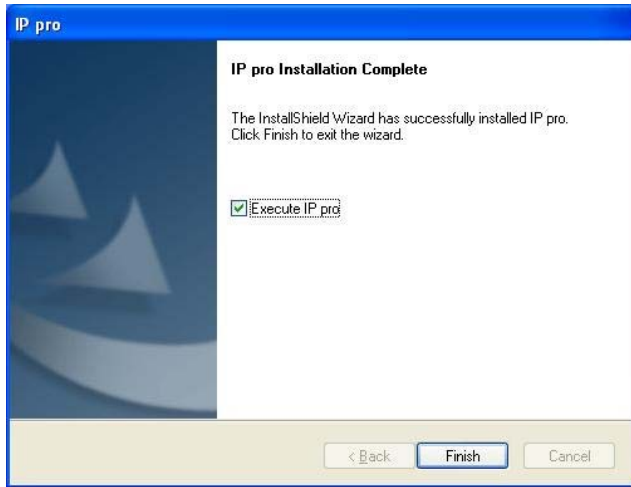



2.5. IP Pro will be installed into Program Files of your system.




2.6. The following "installation complete" window will appear after successful installation of the

program.

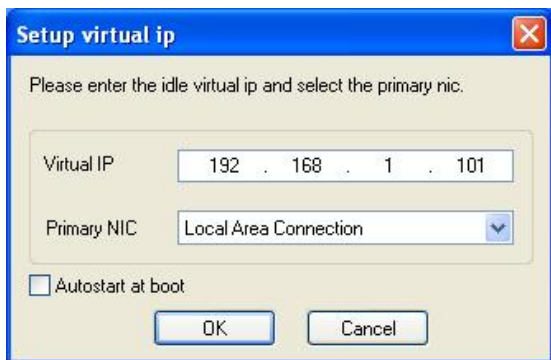


2.7. An IP Pro Icon () will be created on the desktop after successful installation.

When running IP Pro from your desktop, the icon () will be displayed as a tray icon in the task bar with the program becoming operational.

3 IP Pro Setup

When an IP Pro is launched, the following window for configuration will appear.



Virtual IP: Enter the virtual IP address to be used by the user.

Primary NIC: Choose the primary communication network card.

Auto-start at boot: Any users included in the user profile will be connected to the virtual IP address when booting up.

4 Virtual IP Function Check

Verify the operation of Virtual IP addresses by the following methods.

5 Virtual IP Change

To change virtual IP addresses, either double-click or right-click on the IP Pro Tray Icon and choose "Virtual IP Properties."

Enter "LGMonitor" in the password box when confirming the changes when you are finished.



Change the Virtual IP settings in the virtual IP Setup Window.

6 Terminating IP Pro

To terminate IP Pro, right-click on the IP Pro Tray Icon and select "Finish."

Enter "LGMonitor" in the password box when confirming the changes when you are finished.

7 Deleting IP Pro

To delete IP Pro, select "Add/Remove Programs" on the Control Panel or find [Delete IP Pro] in [IP Pro] from Start-Programs menu.

[Glossary]

NIC

Refers to the Network Interface Card, more commonly known as the LAN Card. The NIC is an expansion board that is inserted into a computer to connect the computer to available external networks for the fast exchange of data. The NIC consists of a control chip, a communication-designated chip and a buffer.

The NIC included in the manual is a computer component installed on the host pc in the type of a PCI card that can be connected via a LAN cable to other computers and the internet environment. It refers to both physical computer connections and logic connections as shown on the [Start]→ Settings → Control Panel → Network.

IP Address

Refers to the labels assigned to identify devices participating in computer network communication, utilizing TCP/IP protocols.

IPs described in the manual, refer to IP addresses that need to be entered into the address field, as in the following example box, to connect the computer with the manager tool, installed in the PC, during installation of a the user tool.

